



**Venue Visual Story for LUX**

## **INDEX**

1. Information About LUX	<b>2</b>
2. Where is LUX?	<b>3</b>
3. Driving/Parking	<b>5</b>
4. Public Transport	<b>5</b>
Archway Tube Station	<b>5</b>
Buses	<b>9</b>
5. Entering the Space	<b>13</b>
7. Good Host	<b>16</b>
8. Reception	<b>17</b>
9. Inside the Screening	<b>18</b>
10. Bathrooms	<b>18</b>

## 1. Information About LUX

This event is happening at LUX.

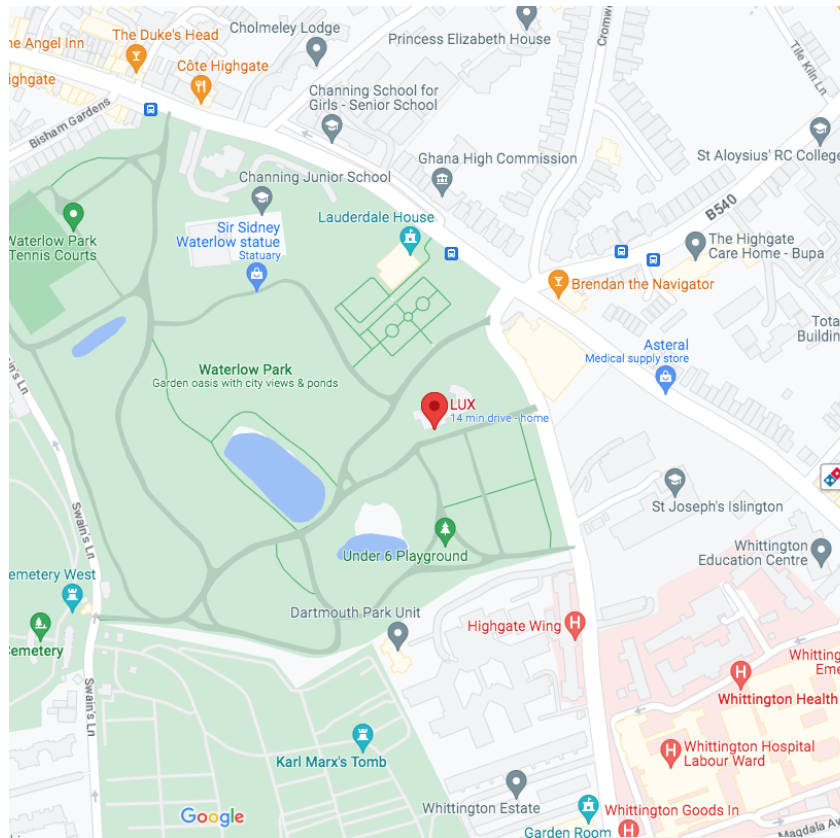
Here is a photo of the outside of the building.



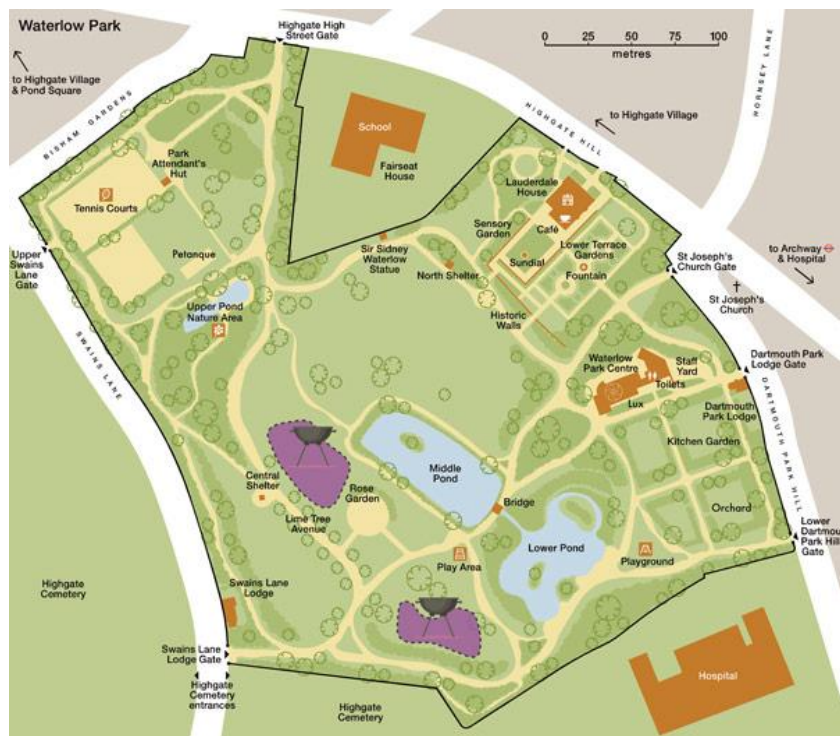
## 2. Where is LUX?

**LUX**  
Waterlow Park Centre  
Dartmouth Park Hill  
London  
N19 5JF

[View Google Maps and get directions](#)



Our building is inside Waterlow Park, not on the street. There are maps at all entrances to the park showing the location of LUX. The nearest park entrance to LUX is on Dartmouth Park Hill by the Dartmouth Park Lodge.



### 3. Driving/Parking

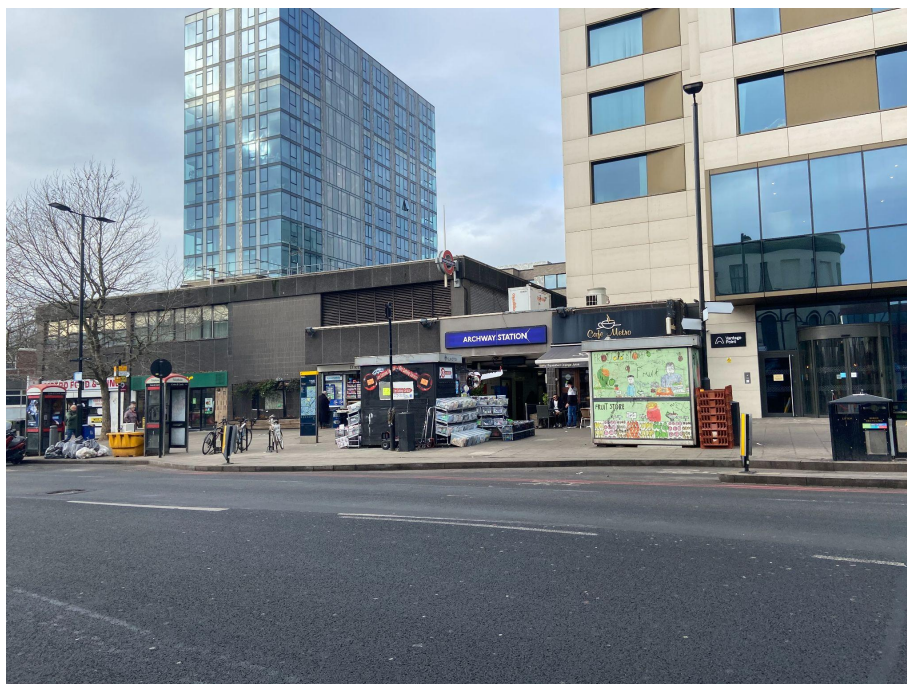
There is no parking at Waterlow Park. Free on-street parking is available after 12pm, 7 days a week. The nearest on-street parking to LUX is on Cromwell Avenue N6.

### 4. Public Transport

#### Archway Tube Station

Archway Tube Station is approximately a 10 minute walk away, uphill. Archway station has no step-free access.

This is what Archway Tube Station looks like.



To walk to LUX, take the exit on the right hand side to Junction Road.



To the left of the station entrance is Cafe Metro, and right outside the station entrance on the pavement is Hassan's Archway Tower Kiosk/Household Goods.

When leaving Archway Tube Station, then turn left again once you get to the traffic lights.



Continue to walk up Highgate Hill.



When you reach the traffic light on Macdala Avenue, cross the road and continue walking straight.



When you reach the traffic light on Macdonald Road, cross the road and continue walking straight uphill.



When you reach the traffic lights on Dartmouth Park Hill outside of St Joseph's RC Parish Church, turn left on to Dartmouth Park Hill.





Once you are on Dartmouth Park Hill, walk straight down the road and pass the first entry gate, until you reach the Dartmouth Park Lodge Gate entrance on your right.



When entering the park, continue to walk straight until you reach the LUX entrance on your right.



## Buses

Bus stop to LUX is just outside Archway station on Highgate Hill on the right-hand side. It is a Bus Stop E.





Take a bus 143, 210, 271, W5, or C11 for two stops and exit the bus at Waterlow Park stop.



From the bus stop continue going down the hill.

When you reach the traffic lights turn right to Dartmouth Park Hill.



Once you are on Dartmouth Park Hill, walk straight down the road and pass the first entry gate, until you reach the Dartmouth Park Lodge Gate entrance on your right.



When entering the park, continue to walk straight until you reach the LUX entrance on your right.



## 5. Entering the Space

To get inside the LUX building, you will need to enter through the black double doors.



## 6. Inside LUX

Here is a photo of the reception.



Here is a photo of the library.



Here is a photo of the screening room.



Here is a photo of the conservatory.



## 7. Good Host

Look for the person in **yellow vest** and with a name tag that reads “Good Host”, or ask someone to take you to them.

### What does a Good Host do?

A Good Host welcomes you into the space, and shows you around if you haven't been there before. The Good Host can introduce you to others if you feel like meeting new people, however they can leave you alone if you don't. The Good Host can answer any questions about seating, content and sensory warnings, and any other concerns you may have. If they don't have an answer, they'll tell you that. The Good host is also available for any accessibility needs. If the Good Host is not at the door to welcome you in, they may be with someone else.

The Good host would also be the person to contact before coming to the show, if you'd like to be met at a bus stop and guided to the space. Contact [sun@lux.org.uk](mailto:sun@lux.org.uk) for any questions about this or any other curiosities about the Good Host.



This is a photo of the Good Host, Sun.



## 8. Reception



This is a photo of Aarony. They will check you in at the reception.

Look for Aarony when you arrive at LUX - no need to bring a printed ticket, they will take your name and just check you off a list!

Aarony is the person to ask if you have any questions or concerns about your ticket, and you can also come to them with any other questions you have related to the event or LUX.

You can contact Aarony at [events@lux.org.uk](mailto:events@lux.org.uk)

## 9. Inside the Screening

The event will happen in the screening room which is located to the left of the reception through the library. To get to the screening room you can follow the signs or ask a Good Host for help.

## 10. Bathrooms

To the right of the LUX entrance, there are three public bathrooms. The one on the left is for women, the one in the middle is accessible, and the one on the right is for men. There are no gender neutral toilets in the park.



This visual story is based on one created by Progress LAB 1422.

